

## rebi Prt *Evo*

### Rotary medical sealer for the sealing of pouches and reels Conforming to DIN 58953-7 standard Integrated dot matrix printer

#### **Packaging Process**

The model rebi Prt *Evo*, fully complies with DIN 58953-7 standards.

#### **Safety**

The reliable and well known Gandus 12 mm wide multiline seal guarantees a perfect seal strength with an easy and safe peelability.

#### **Packaging**

All rebi *Evo* models are suitable for the sealing of all known, sealable, pre-made sterile barrier systems, uncoated Tyvek<sup>®</sup>, as well as the newest generation of packaging material.

#### **HI - Human Interface**

User friendly 8 characters on 2 lines digital display and a wide and clear keyboard.

#### **Print Facility**

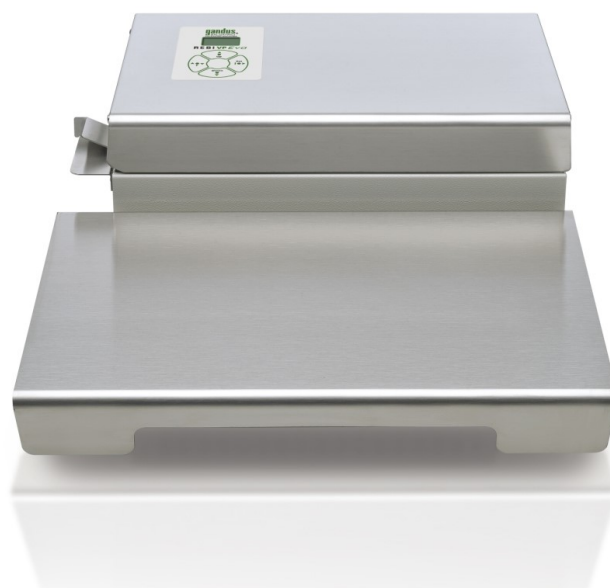
Last generation 9 dot matrix printer allows to print on packaging all the requested data.

#### **Cleaning and Disinfection**

Stainless steel top cover allows an easy and effective cleaning and disinfection.

#### **Energy saving**

All Gandus medical sealers are designed and manufactured to enable process optimization, fully respecting energy saving efficiencies.



## rebi Prt Evo

### Rotary medical sealer for the sealing of pouches and reels Conforming to DIN 58953-7 standard Integrated dot matrix printer

#### Technical data

##### GENERAL FEATURES

Stainless Steel frame

Painted Steel frame

Built-in adjustable guide

Adjustable free edge

##### SEALING

Rotary sealing

Kind of sealing: multiline, flat as option

Sealing width 12 mm

Sealing length unlimited

Distance sealing-medical product mm  $\geq 30$  Din rules

##### HEAT SEALABLE MATERIALS

Pouches/reels EN 868-5

Tyvek<sup>®</sup> pouches/reels

Paper pouches EN 868-4

Gusseted pouches/reels

Laminated AL pouches

PP pouches

Ultra<sup>®</sup> pouches/reels

##### ISO 11607-2

Temperature control

Overheating temperature probe

Sealer functioning diagnostic and check

Alarm/stop temperature tolerance  $\pm 5$  °C (DIN 58953-7)

Alarm and stop adjustable tolerance

##### CERTIFICATIONS/SAFETY

UNI EN 868-5:2009

DIN 58953-7

Directives 2006/42/EC-2014/30/EU-2014/35/EU

Manufactured in a UNI EN ISO 9001:2015 quality system certified company

##### PARAMETERS

Sealing speed 6 mt/min

Max sealing temperature 200°C / tolerance  $\pm 1\%$

Self adjustable Reference Sealing force

Overheating control

##### DATABASE

Expiry date saving

##### INTERFACES

Display 2 lines 8 cht

Membrane keyboard

#### Technical data

##### CALIBRATION

Automatic self check of thermocouple battery and remote server condition at start-up

Heating autocalibration function

Temperature calibration

##### FUNCTIONS

Microprocessor

Multilanguage menu

Starting photocell

Temperature setting

Stand by / Energy saving / Safety thermostat

On board battery for data retention even with machine off

Peripherals condition and diagnostic check up at start-up

Display shutdown

Absolute counter

Clock and calendar function

Beeper on/off

##### BUILT-IN PRINTER FUNCTIONS

On/off print

EN symbols

1 Print line

Adjustable print position

Production and expiry date

##### POWER SUPPLY

Power supply 100; 110/115; 230/240 VAC single phase

Frequency 50/60 Hz

Multi-frequency

Max Power 500 W

##### ACCESSORIES

Front Support Tray

Roller Support Tray

Roll holder

##### SERVICES

Seal strength test EN 868-5

Machine calibration

Maintenance

##### DIMENSIONS / WEIGHTS

Dimensions 473x235x181 mm

Weight 13,6 Kg